

Submersible sump pumps suitable for draining garages, cellars and other places subjected to flooding and for garden ponds and small water displays. They can be applied for portable and fixed installations. Supplied with 5 m cable length type H05 RN-F and available with or without float switch. (10 m cable H05 RN-F on request)



SPECIFICATIONS

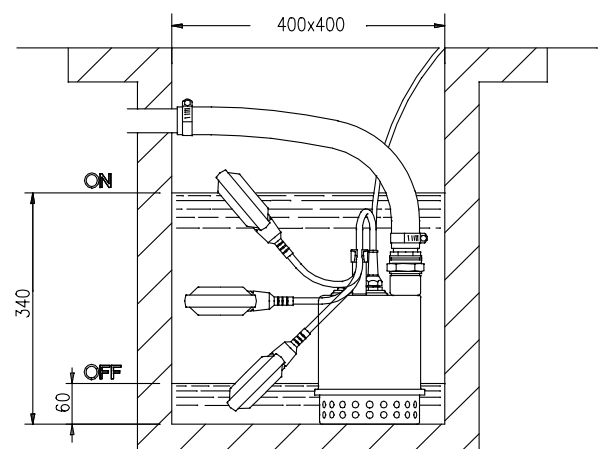
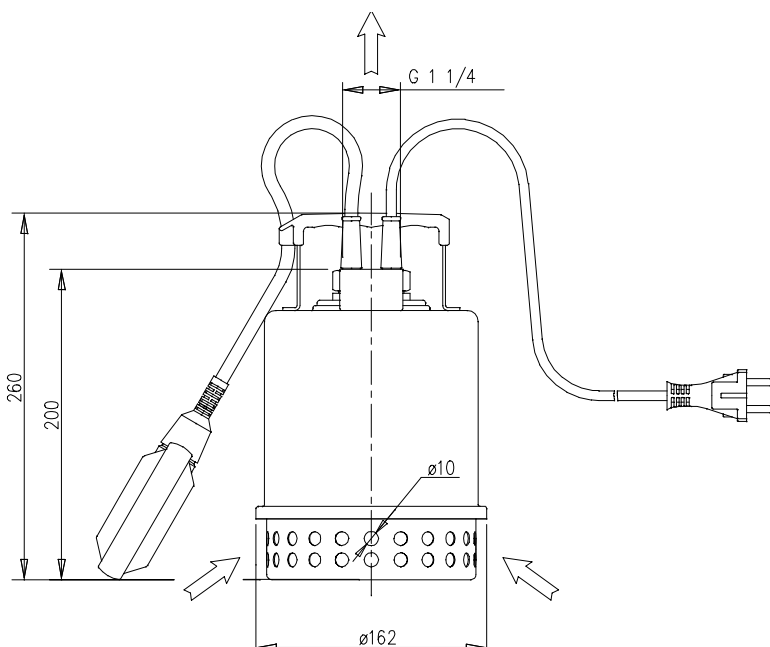
- Maximum liquid temperature:
35°C according EN 60335-2-41 for domestic uses
40°C for other uses
- Maximum immersion: 5 m
- Maximum passage of solids: 10 mm

TECHNICAL DATA

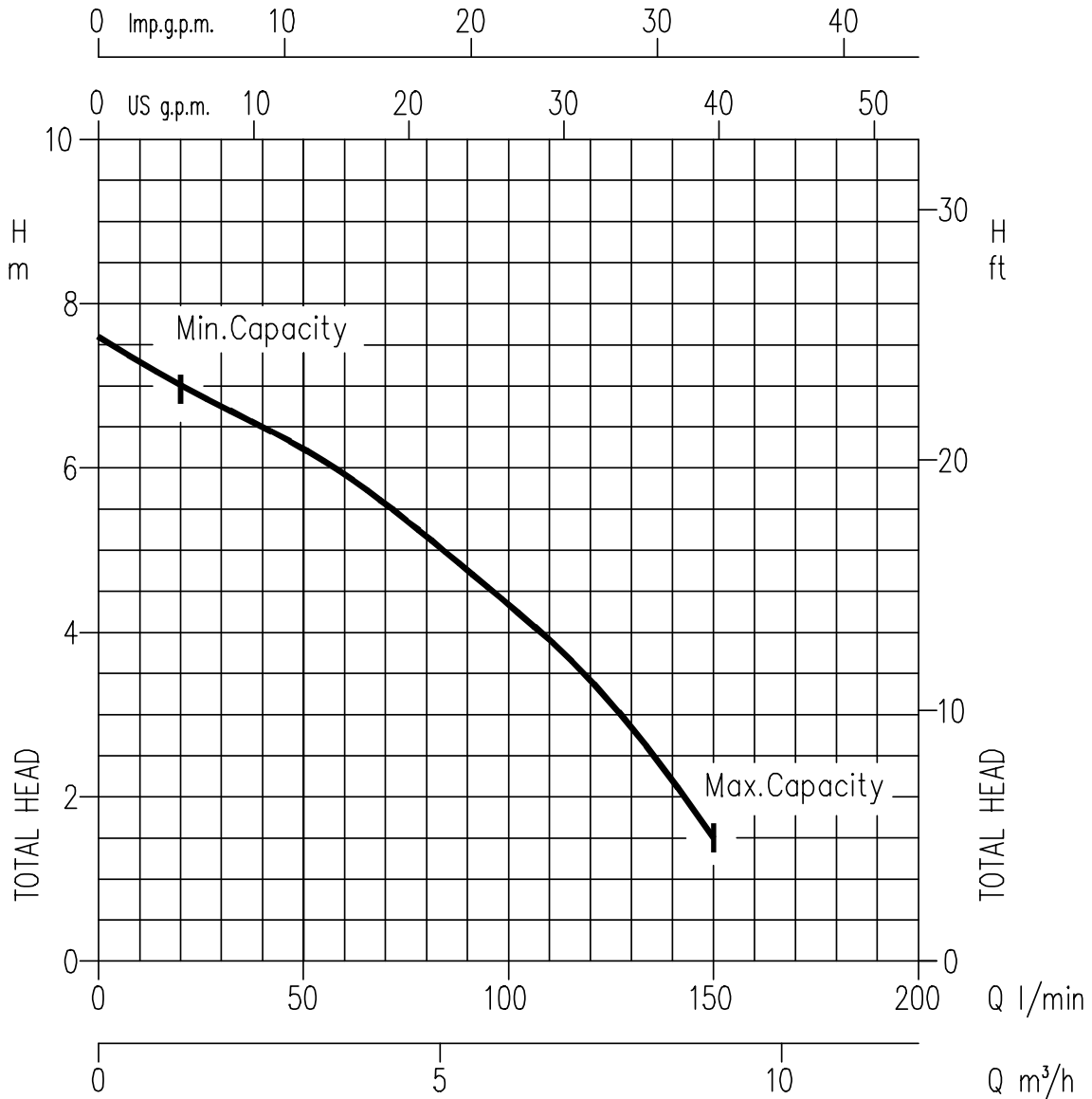
- Asynchronous 2 poles motor
- Insulation class F
- Protection degree IP68
- 1~230V \pm 10%, 50Hz
- DNM 1 $\frac{1}{4}$

MATERIALS

- Pump casing, strainer, cover and motor casing in AISI 304
- Impeller, diffuser and spacer in tecnopolymer
- Shaft in AISI 303
- Grease lubricated double lip seal



PERFORMANCE CURVE (according to ISO 9906 Annex A)



PERFORMANCE TABLE

Pump type		kW	Capacitor		Abs. Curr. (A)		l/min m³/h	Q=Capacity						Pump type	Weight kg
Single-phase 230 V	Three-phase 400 V		μF	V _c	Single-phase	Three-phase		20	50	75	100	125	150		
BEST ZERO M	BEST ZERO	0,25	8	450	1,9	0,95		1,2	3	4,5	6	7,5	9	BEST ZERO MA	4,4
								7	6,3	5,4	4,3	3,1	1,5	BEST ZERO M	4,2
														BEST ZERO	4,4

MA = only for single-phase with float switch